

Historic, archived document

Do not assume content reflects current scientific knowledge, policies, or practices.



62.41

D. M. FERRY
RECEIVED
★ FEB 1 1929 ★
U. S. Department of Agriculture.

1929

SEEDS IN BULK

**WHOLESALE TRADE LIST
AND TELEGRAPHIC CODE
FOR MERCHANTS ONLY**



Keep this List Handy.
We may have occasion to Wire you in Code.

OFFERED BY
D. M. Ferry & Co.
Seedsman
DETROIT - MICHIGAN

SPECIAL NOTICE

WE HANDLE absolutely nothing that we do not believe to be the best obtainable. Our unequaled advantages for the production of the best seeds enable us to offer them to our customers at the lowest prices for which well grown and selected seeds true to name can be furnished.

Cheap goods in our line should be resolutely shunned by all dealers who want to supply seeds that will satisfy and make money for the planters and gardeners who trust them with their orders. Our seeds have behind them a history of constant success during the past seventy-three years and we continue to affirm—

The best is always the cheapest;

☞ These prices are made in anticipation of probable results of crops, therefore, we are not bound by them for any definite time or quantity and they are subject to change without notice.

Seeds in bulk are sold outright and are not returnable.

The prices are for delivery f. o. b. cars, Detroit, Mich., and do not include the cost of containers. When seamless cotton grain bags, boxes, or barrels are necessary for safe transportation, such packages are charged at value and are not returnable.

We do not supply less than 10 pounds at the 100 pound rate nor less than one-half pound at the pound rate nor less than one-half ounce at the ounce rate. Smaller quantities will be priced at higher rates.

The varieties in each class (for example, Wax Podded Beans) are usually arranged in their order of earliness.

TERMS for all seeds we sell including Vegetable, Flower Seeds, Lawn Grass, White Dutch Clover and Bird Seeds. Net 60 days $1\frac{1}{2}\%$ discount for cash 10 days from date of shipment. Cash or satisfactory references should accompany orders from unknown correspondents.

We give no warranty, express or implied, as to description, purity, productiveness, or any other matter of any seeds we send out, and we will not be in any way responsible for the crop. If the purchaser does not accept the goods on these terms they are at once to be returned.

D. M. FERRY & CO.

DETROIT, MICH., January 7, 1929.

☞ In telegraphing, please use our CODE on page 49. Our telegraph cipher words should be used in *Telegrams only*—not in *Orders by Mail*.

NEW ADDITIONS TO OUR LIST FOR 1929

CABBAGE

Golden Acre. A strain of Copenhagen Market selected to produce an earlier and somewhat smaller head. The plants are compact with few outer leaves. A very desirable strain of early round headed cabbage. (*See page 25 of our 1929 Seed Annual.*) Per Lb. \$5.00; 25 Lbs. or more, Per Lb. \$4.50

SPINACH

Giant Thick Leaved (Nobel). An early, very productive variety with extra large rounded smooth leaves. The leaves are medium light green in color, very thick and of excellent quality. Stands very well without bolting. (*See page 55 of our 1929 Seed Annual.*) Per Lb. 22c; 10 Lbs. or more, Per Lb. 18c; 500 Lbs. or more, Per Lb. 16c

CHINESE FORGET-ME-NOT

(*Cynoglossum*)

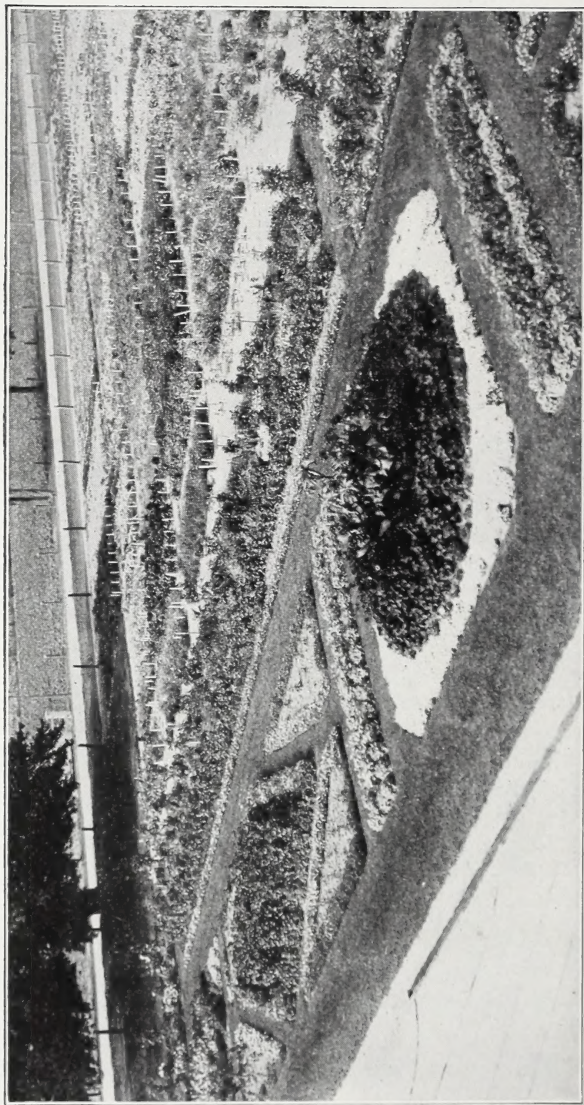
Amabile Blue. A hardy annual species of Forget-Me-Not recently introduced from China. Medium dark blue flowers on medium long stems. Desirable for bedding and borders. (*See page 70 of our 1929 Seed Annual.*) Oz. 40c; Lb. \$4.00

TEXAS BLUE BONNET

The state flower of Texas. A dwarf growing plant ten or twelve inches tall producing a profusion of spikes of pea shaped blue flowers. Desirable for low borders and window boxes. (*See page 90 of our 1929 Seed Annual.*) Oz. 25c; Lb. \$2.50

PETUNIA

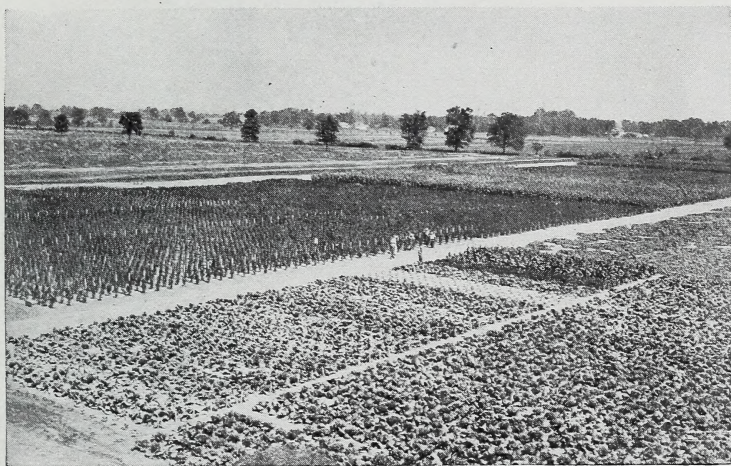
Hybrida Violet King. Deep violet-purple colored single flowers. Plants are of the hybrida type and the flowers are borne profusely over a long season. (*See page 81 of our 1929 Seed Annual.*) Oz. \$1.50



View of decorative beds and part of the flower trials at our experimental garden. See our flower seed list, commencing on page 33



Central portion of our Oakview Stock Seed Farm



Part of vegetable trials at our Experimental Garden

The Stock Seed Farm and Experimental Garden occupy 850 acres, located 2 miles south of Rochester, Mich; a little more than 20 miles from our offices in Detroit.

We extend a cordial invitation to our friends and customers to visit these farms at any time.

STANDARD SEEDS IN BULK

ARTICHOKE

	Tel. cipher	Per lb.	10 lbs. or more per lb.
Green Globe	Bache	\$ 6.00	\$ 6.00

ASPARAGUS

Palmetto	Bacon50	.45
Martha Washington	Baden75	.60
Mary Washington	Bado	1.50	1.40

ASPARAGUS ROOTS

	Tel. cipher	Per 1000
Palmetto	Bagby	\$ 6.00
Martha Washington	Bagwell	7.00
Mary Washington	Bahama	9.00

BEANS—Dwarf or Bush

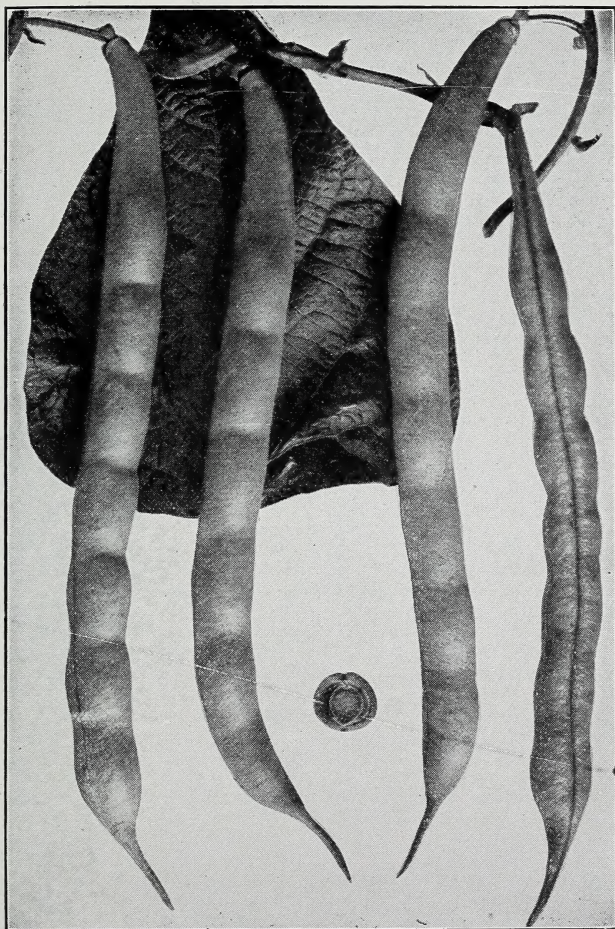
WAX PODDED SORTS

	Tel. cipher	Per lb.	10 lbs. or more per lb.	600 lbs. or more per lb.
Challenge Black Wax	Bains			Sold out
Ferry's Golden Wax	Baker			Sold out
Michigan White Wax	Balboa	\$.30	\$.27	\$.25
Grenell Rust Proof Wax	Balcom			Sold out
Refugee Wax	Baldi			Sold out
Prolific Black Wax	Beagle			Sold out
Pencil Pod Wax	Beard			Sold out
Currie's Rust Proof Wax	Beason30	.27	.25
Sure Crop Wax	Becton30	.27	.25
Unrivaled Wax	Bedell			Sold out
Wardwell's Kidney Wax	Beekman			Sold out
Stringless Kidney Wax	Beelake40	.38	.35
Round Pod Kidney Wax	Beeler40	.38	.35
Davis Wax	Beetle			Sold out
Violet Flageolet Wax or Perfection Wax	Bejou25	.22	.20
Hodson Wax	Bellair35	.32	.30
Crystal White Wax	Bellamy25	.22	.20

BEANS—Dwarf or Bush—Continued

GREEN PODDED SORTS

	Tel. cipher	Per lb.	10 lbs. or more per lb.	600 lbs. or more per lb.
Early Refugee.....	Belsano...	\$.30	\$.27	\$.25
Bountiful.....	Belton.....			Sold out
Full Measure.....	Belva.....			Sold out
Red Valentine.....	Bem.....	.30	.27	.25
Black Valentine.....	Bemus.....	.35	.30	.28
Stringless Green Pod.....	Bendon.....	.38	.35	.35
Giant Stringless Green Pod (See cut).....	Benoit....	.38	.35	.35



Giant Stringless Green Pod

BEANS—Dwarf or Bush—Continued

GREEN PODDED SORTS

	Tel. cipher	Per lb.	10 lbs. or more per lb.	600 lbs. or more per lb.
Tennessee Green Pod	Benrud			
Dwarf Horticultural	Bentree	\$.30	\$.27	Sold out \$.25
Refugee or Thousand to One. Remarkably productive. Stands handling well and is a very popular variety with canners.	Benwood	.35	.30	.28
Rogers' Stringless Refugee	Benzien			Sold out
Early Marrow Pea or White Navy	Bercail	.18	.15	.14
Large White Marrow or Mountain	Berea	.20	.17	.16
White Kidney	Bergoo	.20	.18	.17

DWARF LIMAS

Henderson's Bush Lima	Bethune	.20	.17	.15
Burpee's Improved Bush Lima	Betsey	.28	.25	.22
Dwarf Large White Lima (<i>Burpee's</i>)	Beulah	.25	.22	.20
Fordhook Bush Lima	Beury	.38	.35	.35

Pole or Running

White Creaseback	Bevan	.20	.18	.17
Kentucky Wonder. (Old Homestead). Very productive and of the best quality for snaps.	Bevier	.20	.18	.17
Nancy D.	Bexar	.20	.18	.17
St. Louis Perfection White. Early, very productive, white seeded; unsurpassed in its class.	Bias	.20	.18	.17
Red Speckled Cut Short	Biddle	.20	.18	.17
Scotia or Striped Creaseback. Especially suitable for growing on corn for snaps.	Bigelow	.20	.18	.17
Dutch Case Knife	Bingo	.25	.22	.20
Kentucky Wonder Wax. Similar to Kentucky Wonder, but pods are attractive light yellow.	Biola	.25	.22	.20
Golden Cluster Wax	Bird	.25	.22	.20
Improved London Horticultural	Birta	.25	.22	.20
London Horticultural or Speckled Cranberry	Birome	.22	.19	.17
Lazy Wife	Bisbe	.23	.20	.18
Scarlet Runner (<i>See flower seed section</i>)				

POLE LIMAS

Seibert's Early Lima	Biscoe	.22	.20	.18
Small White Lima, Carolina or Sieva	Bishop	.20	.17	.16
Ideal Pole Lima	Bison	.25	.22	.20
King of the Garden Lima	Bivins	.25	.22	.20
Carpinteria Pole Lima. Very large beans with greenish tint, and very best quality.	Blade	.25	.22	.20
Detroit Mammoth Lima	Blaney	.28	.25	.22
Large White Lima	Blanks	.22	.20	.18



Breeding plot of Detroit Dark Red Beet at Oakview. Plants from the highest type of roots are isolated in the cages and are self pollinated. These furnish the pure breeding for future crops.

BEET

	Tel. cipher	Per lb.	50 lbs. or more per lb.
Extra Early Egyptian Blood Turnip.....	Blanton ..	\$.50	\$.45
Crosby's Egyptian.....	Blazer ..	.50	.45
Early Wonder.....	Bliss ..	.50	.45
Detroit Dark Red. Tested seed, our own superior strain.....	Block ..	.60	.50
Early Eclipse.....	Blond ..	.40	.35
Edmand's Early Blood Turnip.....	Bloom ..	.40	.35
Early Blood Turnip, improved.....	Blox ..	.40	.35
Ferry's Half Long Blood.....	Blue ..	.60	.50
Long Dark Blood in Ground.....	Blunt ..	.40	.35
Long Dark Blood above Ground.....	Bodie ..	.50	.45
Swiss Chard. Silver Leaf.....	Brazoria ..	.45	.40
Swiss Chard. Lucullus.....	Breathit ..	.45	.40

MANGEL WURZEL

Giant Feeding Sugar Beet or Half Sugar Mangel. For Stock Feeding.....	Brooks ..	.20	.18
Mammoth Long Red.....	Buncombe ..	.20	.18
Yellow Leviathan.....	Burke ..	.20	.19
Golden Tankard.....	Burnett ..	.25	.22

SUGAR BEET

Klein Wanzleben.....	Bristol.....	.25	.22
----------------------	--------------	-----	-----

BROCCOLI

	Tel. Cipher	Per lb.	10 lbs. or more per lb.
Early Large White French.....	Butts.....	\$3.00	\$2.75
Italian Green Sprouting.....	Byron ..	6.50	6.00

BRUSSELS SPROUTS

Long Island Improved.....	Cache ..	1.50	1.40
---------------------------	----------	------	------



Our own strain of Hollander grown from a single selected head which was hand-pollinated in one of our greenhouses. By reselecting and continuing the process of hand-pollination we produce the stock seed which enables us to maintain the uniform character of our stocks.

CABBAGE

FIRST EARLY SORTS

	Tel. cipher	Per lb.	25 lbs. or more per lb.
Early Jersey Wakefield. The earliest and surest heading of first early cabbages.....	Caddo	\$ 2.00	\$ 1.75
Golden Acre	Cagle	5.00	4.50
Copenhagen Market	Callahan ..	3.50	3.00
Charleston or Large Wakefield	Calhoun ..	2.00	1.75

SECOND EARLY AND INTERMEDIATE SORTS

Early Dwarf Flat Dutch	Camden ..	1.50	1.25
Glory of Enkhuizen	Cambria ..	2.50	2.40
All Head Early	Camp	1.75	1.50
Early Winnigstadt	Cannon ..	1.75	1.50
Succession	Carter	1.75	1.50
Midseason Market	Cargile ..	2.50	2.25
All Seasons	Carbon ..	1.75	1.50
Wisconsin All Seasons (Yellows Resistant)	Cardale ..	3.25	3.00
Stein's Early Flat Dutch	Carlisle ..	2.00	1.75

LATE OR AUTUMN AND WINTER SORTS

Volga	Cascade ..	1.50	1.25
Surehead	Casey	1.50	1.25
Ferry's Premium Late Flat Dutch	Catoosa ..	1.50	1.25
Hollander or Danish Ball Head. Our own strain and growth.....	Chatham ..	6.50	6.00
Hollander or Danish Ball Head. Choice imported seed.....	Chase	3.00	2.75
Wisconsin No. 8	Chariton ..	3.00	2.75
Mammoth Rock Red	Chemung ..	2.00	1.75
Savoy, Improved American	Cherry	1.75	1.50

CHINESE IMPROVED or PE-TSAI. Also called

Celery Cabbage. Grows like Cos Lettuce.....	Cheshire ..	1.25	1.25
--	--------------------	------	------

CARROT

	Tel. cipher	Per lb.	50 lbs. or more per lb.
French Forcing, <i>Earliest Short Horn</i>	Chester...	\$.75	\$.70
Early Scarlet Horn.....	Chicot.....	.70	.65
Carentan, <i>coreless</i>	Chippewa.....	.75	.70
Nantes, <i>Stump-Rooted</i>	Choctaw..	.70	.65
Chantenay.....	Chowan..	.60	.55
Guerande or Ox Heart.....	Clare.....	.60	.55
Danvers. Our strain is unsurpassed.....	Clark.....	.60	.55
Improved Long Orange.....	Clatsop...	.50	.45
Ferry's Improved Short White.....	Clayton..	.45	.40



Early Snowball

CAULIFLOWER

Our stocks of Cauliflower are all of the finest quality and are produced by the most experienced growers in Europe, in such localities as are best suited to their proper development and the greatest care is taken to save seed from perfectly developed plants only.

	Tel. cipher	Per oz.	Per lb.	5 lbs. or more per lb.
Early Snowball. This is unquestionably the earliest maturing strain of the true short leaved Snowball type. (<i>See cut</i>)...	Clermont.	\$ 1.25	\$18.00	\$16.00
Extra Early Dwarf Erfurt. A remarkably sure heading early cauliflower. It is nearly as early as Snowball.....	Clinton...	1.15	16.00	14.00
Danish Giant, Dry Weather. Especially recommended for growing in the open ground. In localities where other varieties fail to head on account of hot, dry weather, this sort will usually give excellent results.....	Coahoma.	1.25	18.00	16.00
Large Algiers.....	Coconino.	.60	7.00	6.50
Veitch's Autumn Giant.....	Coffee....	.40	5.00	4.75



Golden Yellow Self Blanching
CELERY

	Tel. cipher	Per lb.	5 lbs. or more per lb.
Golden Yellow Self Blanching (true, original strain). Oz. 50c (<i>See cut</i>).....	Coke.....	\$ 6.00	\$ 5.50
Wonderful.....	Colbert...	6.00	5.50
White Plume.....	Coleman...	2.00	1.75
Easy Blanching.....	Colfax....	6.00	5.50
Columbia.....	Colleton..	3.50	3.25
Giant Pascal.....	Comanche	2.50	2.25
Winter Reliance. A very desirable late keeping variety.....	Conejos..	2.50	2.25
French's Success.....	Converse..	2.50	2.25
Soup or Cutting.....	Cooper....	.75	.70
Celery Seed (<i>for flavoring</i>).....	Coosa....	.30	.30
CELERICAC, Large Smooth Prague.....	Cortland..	1.25	1.25

CHERVIL

	Tel. cipher	Per lb.	5 lbs. or more per lb.
Curled.....	Costilla...	\$ 1.50	\$ 1.25

CHICORY

	Tel. cipher	Per lb.	10 lbs. or more per lb.
Large Rooted or Coffee.....	Coweta...	\$ 1.00	\$.95
Witloof or French Endive.....	Cowley...	1.25	1.15
Small Rooted or Radichetta.....	Cowpens..	1.25	1.15

CHIVES

	Tel. cipher	Per oz.
Allium Schoenoprasum.....	Cowlitz	\$.50

COLLARDS

	Tel. cipher	Per lb.	10 lbs. or more per lb.
Georgia, Southern or Creole.....	Crane.....	\$.60	\$.55

CORN

SHELLED

CAUTION—Sweet Corn in bulk, even after being thoroughly cured, will often gather moisture and spoil, particularly if it has been exposed to a low temperature. To prevent this it should be taken out of the bags as soon as received and spread in a dry place.

SWEET OR TABLE VARIETIES

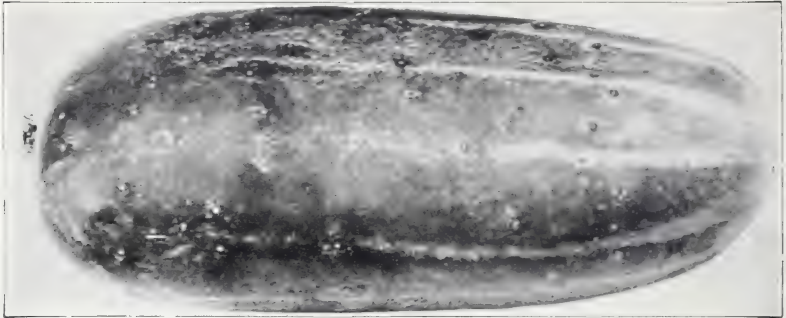
	Tel. cipher	Per lb.	10 lbs. or more per lb.	500 lbs. or more per lb.
Alpha.....	Craven...	\$.18	\$.15	\$.14
Mammoth White Cory.....	Crawford..	.17	.14	.13
Crosby's Early.....	Cross.....	.17	.14	.13
Golden Bantam.....	Culpeper..	.17	.14	.13
Charlevoix.....	Cuming...	.18	.15	.14
Early Minnesota.....	Curry.....	.17	.14	.13
Kendel's Early Giant.....	Cuyahoga..	.16	.13	.12
Early Sweet or Sugar.....	Dakota.....	.16	.13	.12
Black Mexican.....	Darke.....	.17	.14	.13
Ferry's Early Evergreen.....	Davidson..	.16	.13	.12
Country Gentleman.....	Davis.....	.17	.14	.13
Stowell's Evergreen.....	Dawes.....	.16	.13	.12
Mammoth.....	Day.....	.17	.14	.13

FIELD VARIETIES

Extra Early Adams.....	Decatur...	.13	.11	.10
Early Adams or Burlington.....	Dekalb...	.12	.10	.09

POP CORN (SHELLED)

Black Beauty.....	Desha.....	.18	.14	.13
White Rice.....	Deuel.....	.15	.10	.09
Japanese Hulless.....	Dewar.....	.18	.14	.13
Golden Hulless.....	Dexter....	.18	.15	.14



Early White Spine

CORN SALAD or Feticus

	Tel. cipher	Per lb.	5 lbs. or more per lb.
Large Seeded, Large Leaved.....	Dewitt.....	\$.55	\$.50

CRESS

Curled or Pepper Grass.....	Dickey.....	30	30
True Water.....	Dodge	2 25	2.25

CUCUMBER

	Tel. cipher	Per lb.	50 lbs. or more per lb.
Early Cluster.....	Doniphan	\$.60	\$.55
Early Short Green or Early Frame.....	Dooly60	.55
Snow's Pickling.....	Drew.....	.60	.55
Chicago Pickling.....	Dubois.....	.60	.55
Boston Pickling.....	Dukes.....	.60	.55
Jersey Pickling.....	Dunklin..	.60	.55
Early White Spine (<i>See cut</i>).....	Dupage...	.60	.55
Klondike.....	Dutchess..	.65	.60
Early Fortune.....	Dutro.....	.65	.60
Davis Perfect.....	Dyer.....	.65	.60
Kirby's Stays Green.....	Dyke.....	.65	.60
Evergreen White Spine.....	Duval.....	.80	.75
Improved Long Green. We believe the stock we offer has no equal.....	Eddy.....	1.50	1.25
Lemon.....	Edson.....	.85	.80
Small Gherkin (<i>for pickles</i>).....	Edmonson	1.00	.90

DANDELION

	Tel. cipher	Per lb.	5 lbs. or more per lb.
Cultivated or French Common.....	Edwards..	\$ 2.00	\$ 1.90
Improved Thick Leaved.....	Eldorado..	6.00	5.50



Egg Plant, Ferry's Improved Large Purple

EGG PLANT

	Tel. cipher	Per lb.	5 lbs. or more per lb.
Black Beauty	Ellis	\$ 4.00	\$ 3.75
Large New York Purple	Elmore	3.50	3.25
Ferry's Improved Large Purple, spineless (See cut)	Emanuel	3.50	3.25

ENDIVE

	Tel. cipher	Per lb.	25 lbs. or more per lb.
Large Green Curled	Emmet ...	\$.90	\$.75
Moss Curled	Erath90	.75
Ever White Curled	Estill90	.75
Broad Leaved Batavian or Escarolle	Falls90	.75

FENNEL

	Tel. cipher	Per lb.	5 lbs. or more per lb.
Florence	Farler	\$.90	\$.90

GARLIC

		Per lb.
Bulbs	Faulkner ..	.25



Kohl Rabi, Early White Vienna

HORSE RADISH

	Tel. cipher	Per 100
Small Roots, Maliner-Kren.....	Fentress..	\$ 1.25

KALE or Borecole

	Tel. cipher	Per lb.	25 lbs. or more per lb.
Tall Green Curled Scotch.....	Fergus....	\$.75	\$.70
Dwarf Curled Scotch.....	Finney....	.75	.70
Dwarf Purple.....	Fluvanna..	1.00	.90
Siberian or Sprouts.....	Fleming..	.60	.55

KOHL RABI

	Tel. cipher	Per lb.	10 lbs. or more per lb.
Early White Vienna, <i>extra for forcing (See cut.)</i>	Forest....	\$2.00	\$1.75
Early Purple Vienna, <i>very early</i>	Foster....	2.00	1.75
Large Green.....	Franklin..	1.50	1.25

LEEK

London Flag.....	Fremont..	1.50	1.25
Large American Flag.....	Frio.....	1.50	1.25
Large Rouen.....	Furnas...	1.50	1.25
Monstrous Carentan.....	Gallatin..	2.00	1.75



May King

LETTUCE

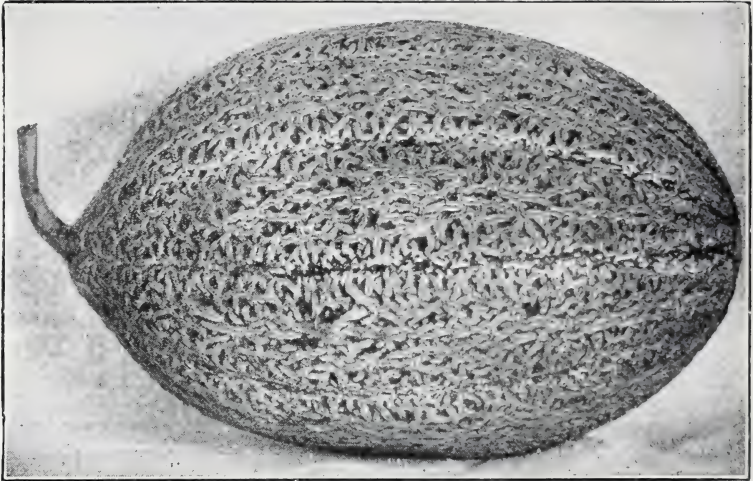
CABBAGE OR HEADING VARIETIES

	Tel. cipher	Per lb.	25 lbs. or more per lb.
May King, w. s. (<i>See cut</i>).....	Garfield ..	\$.85	\$.80
Salamander, b. s.	Gaston ..	.75	.70
Mammoth Black Seeded Butter	Gentry ..	.85	.80
Unrivalled Summer, w. s.	Giles ..	1.00	.95
Big Boston, w. s.	Gilliam ..	1.00	.95
California Cream Butter or Royal Summer Cabbage, <i>brown seed</i>	Gilpin75	.70
Los Angeles (New York, or Wonderful), <i>w. s.</i>	Goliad	1.50	1.25
Hanson, <i>w. s.</i>	Gordon ..	.75	.70

CURLED OR LOOSE LEAVED VARIETIES

Grand Rapids, b. s.	Gove85	.80
Detroit Market Gardeners' Forcing, <i>w. s.</i>	Grafton ..	.85	.80
Simpson's Early Curled, <i>w. s.</i>	Grainger ..	.75	.70
Ferry's Early Prize Head, w. s.	Grant85	.80
Black Seeded Simpson	Graves85	.80

Early White Self-Folding Cos, w. s. (<i>Romaine</i>)..	Gregg ...	1.00	.90
---	------------------	------	-----



Defender

MUSK MELON

GREEN FLESHED VARIETIES

	Tel. cipher	Per lb.	50 lbs. or more per lb.
Extra Early Hackensack	Gunnison	\$.75	\$.70
Netted Gem or Rocky Ford	Gwinnett	.70	.65
10-25, Salmon Tint	Hale	.85	.80
Hackensack	Hansford	.65	.60

ORANGE FLESHED VARIETIES

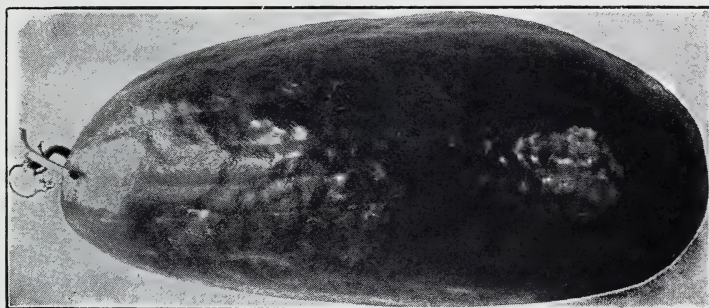
Emerald Gem. For home use and near markets it leads all other kinds on account of its sweetness and convenient size.....	Harford	.75	.70
Daisy	Harjo	.85	.80
Tip Top	Harnett	.75	.70
Extra Early Osage. Fully a week earlier than Osage, a little smaller, more nearly round and with more netting.....	Hart	.80	.75
Gold Nugget. Unexcelled in flavor. We consider this the best small shipping melon yet introduced.....	Haskell	.75	.70
Improved Hoodoo or Hearts of Gold	Hays	.80	.75
Defender. Originated and introduced by us in 1901. We believe it identical with Burrell's Gem (See cut).....	Heard	.80	.75
Osage. Our stock is unsurpassed.....	Hennepin	.85	.80

WINTER MUSK MELONS

Honey Ball	Hermosa	1.25	1.25
Honey Dew	Hernando	1.00	.90
Cassaba, Golden Beauty	Hickory	1.00	.90

WATER MELON

	Tel. cipher	Per lb.	50 lbs. or more per lb.
Harris' Earliest	Hidalgo...	\$.45	\$.40
Ferry's Peerless	Hocking..	.45	.40
Round Light Icing	Holt.....	.45	.40
Long Light Icing	Hooker ..	.45	.40
Irish Grey	Hopkins ..	.45	.40
Monte Cristo or Kleckley's Sweets (See cut)	Houston ..	.50	.45
Florida Favorite	Howell ..	.45	.40
Tom Watson	Humacao..	.45	.40
Klondike	Hume55	.50
Chilian White Seeded	Ida50	.45
Chilian Black Seeded	Inyo50	.45
Sweet Heart	Idaho45	.40
Gypsy or Georgia Rattlesnake	Ingham ..	.45	.40
Citron, for preserving (red seed)	Iredell....	.50	.45



Monte Cristo or Kleckley's Sweets

MUSHROOM SPAWN

	Tel. cipher	Per brick
Spore Culture. Per 100 bricks (each about 1¼ lbs.) \$16.00	Iroquois..	\$.20

MUSTARD

	Tel. cipher	Per lb.	50 lbs. or more per lb.
White English	Isabella ..	\$.20	\$.18
Southern Giant Curled	Island30	.28
Large Smooth Leaved	Isanti30	.28
Florida Broad Leaf	Isett35	.30

NASTURTIUM

Tall Mixed Garden	Itasca50	.45
-------------------------	--------------	-----	-----

OKRA or Gumbo

	Tel. cipher	Per lb.	25 lbs. or more per lb.
Dwarf Green Prolific.....	Jabez.....	\$.25	\$.22
White Velvet.....	Jackson.....	.25	.22
Dwarf Long Pod, Green.....	James.....	.35	.30
Perkin's Mammoth Long Pod.....	Joffre.....	.25	.22

ONION

Our onion seeds are grown from the choicest selected bulbs raised from pedigree seed of the choicest selected types. You may find onion seed offered for less than ours. You cannot find any of better quality, no matter how high the prices asked.

	Tel. cipher	Per lb.	100 lbs. or more per lb.
Extra Early Red.....	Johnston.....	\$ 1.50	\$ 1.40
Large Red Wethersfield.....	Juneau.....	1.50	1.40
Southport Red Globe.....	Kalawao.....	1.60	1.50
Large Yellow Dutch or Strasburg.....	Kanabec.....	1.50	1.40
Yellow Danvers.....	Kane.....	1.50	1.40
Yellow Globe Danvers.....	Karnes.....	1.60	1.50
Michigan Yellow Globe.....	Kauai.....	1.60	1.50
Southport Yellow Globe.....	Keith.....	1.75	1.60
Mammoth Yellow Spanish or Prizetaker.....	Kenosha.....	1.60	1.50
White Portugal (<i>American Silverskin</i>).....	Kenton.....	2.25	2.00
White Globe.....	Kern.....	2.50	2.25

IMPORTED VARIETIES

Extra Early Barletta.....	Keokuk.....	2.00	1.80
Queen, <i>very early</i>	Kershaw.....	2.00	1.80
Early Neapolitan Marzajola.....	Keweenaw.....	1.50	1.25
Giant White Italian Tripoli.....	Kingman.....	1.50	1.25
Mammoth Silver King.....	Kiowa.....	1.50	1.25



Flower heads of onion at Oakview protected from possible cross pollination by covering with paper bags. In this way we assure the purity of our breeding stocks.



Little Marve

(See page 20)

PARSLEY

	Tel. cipher	Per lb.	25 lbs. or more per lb.
Plain.....	Kittitas..	\$.40	\$.35
Champion Moss Curled.....	Klamath..	.60	.55
Short Thick Rooted.....	Knox.....	.60	.55

PARSNIP

Long White Dutch or Sugar.....	Kossuth..	.35	.30
Hollow Crown or Guernsey.....	Laclede..	.35	.30

PEAS

Wrinkled varieties marked thus*.

FIRST EARLY AND EARLY SORTS

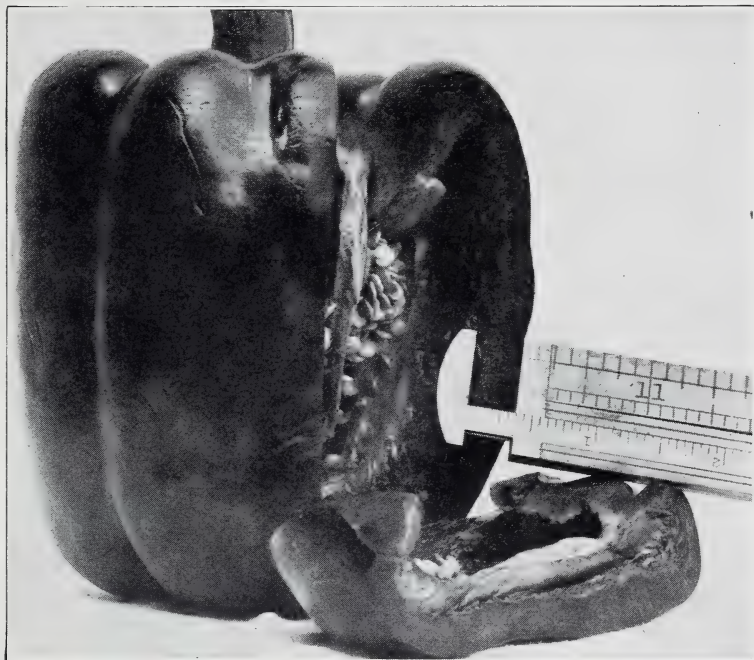
	Tel. cipher	Per lb.	10 lbs. or more per lb.	600 lbs. or more per lb.
Extra Early.....	Lagrange..	\$.16	\$.13	\$.12
Alaska.....	Lamar....	.16	.13	.12
*Thomas Laxton.....	Lamoille..	.18	.15	.14
*Gradus.....	Lancaster..	.18	.15	.14
*American Wonder.....	Langlade..	.18	.15	.14
*Nott's Excelsior.....	Laporte...	.18	.15	.14
*Laxtonian.....	Larne....	.20	.18	.16
*Premium Gem (Improved Little Gem).....	Lasalle...	.17	.14	.13
*Little Marvel (See cut, page 19).....	Latimer...	.20	.18	.16

SECOND EARLY SORTS

*McLean's Advancer.....	Latah....	.16	.13	.12
*Yorkshire Hero.....	Laurel....	.17	.14	.13
*Bliss' Everbearing.....	Lavaca....	.17	.14	.13
*The Admiral.....	Lebanon..	.15	.12	.12
*Green Admiral.....	Lehigh...	.15	.12	.12
*Telephone.....	Lemhi....	.17	.14	.13
*Admiral Beatty.....	Lenawee..	.17	.14	.13
*Alderman.....	Leslie....	.17	.14	.13

LATER SORTS

*Improved Stratagem.....	Letcher...	.17	.14	.13
*Horsford's Market Garden.....	Lipscomb..	.16	.13	.12
Melting Sugar (<i>edible pods</i>).....	Logan....	.20	.18	.17
Giant Butter, Edible Pod.....	Lonoke...	.20	.18	.17
*Champion of England.....	Lorain....	.16	.14	.13
Large White Marrowfat.....	Louisa...	.15	.12	.11
Large Blackeye Marrowfat.....	Lowndes..	.15	.12	.11



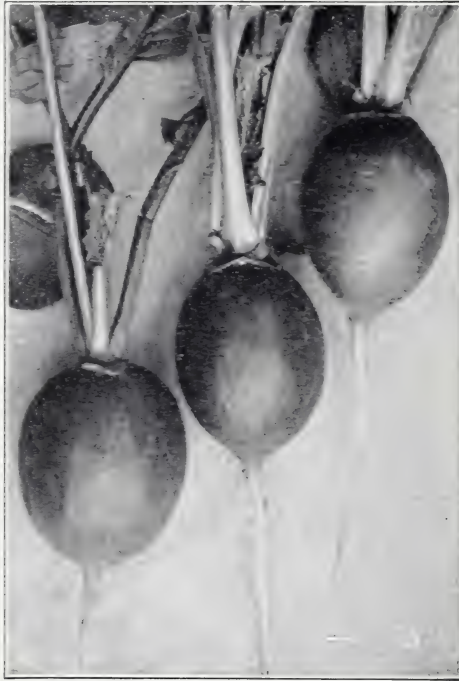
California Wonder. The thickest fleshed of all peppers

PEPPER

	Tel. cipher	Per lb.	25 lbs. or more per lb.
Tabasco.....	Lyden	\$ 3.50	\$ 3.25
Red Cherry.....	Lyman	3.50	3.25
Red Chili.....	Lyon	3.50	3.25
Long Red Cayenne.....	McCook	3.50	3.25
Bell or Bull Nose.....	McKean	3.50	3.25
Royal King.....	McKenzie	3.75	3.50
Ruby King.....	McKinley	3.75	3.50
Pimiento.....	McLeod	3.00	2.75
California Wonder (See cut).....	McLuney	12.00	12.00
Giant Crimson.....	McLennan	4.00	3.75
Chinese Giant.....	McMahan	4.00	3.75
Large Sweet Spanish.....	McMinn	3.50	3.25

PUMPKIN

	Tel. cipher	Per lb.	25 lbs. or more per lb.
Pie or Winter Luxury.....	McNairy	\$.50	\$.45
Sugar or New England Pie.....	Macomb50	.45
Large Yellow.....	Macoupin35	.30
Green Striped Cushaw.....	Madera75	.65
Sweet Cheese.....	Madison35	.30



Early Scarlet Globe

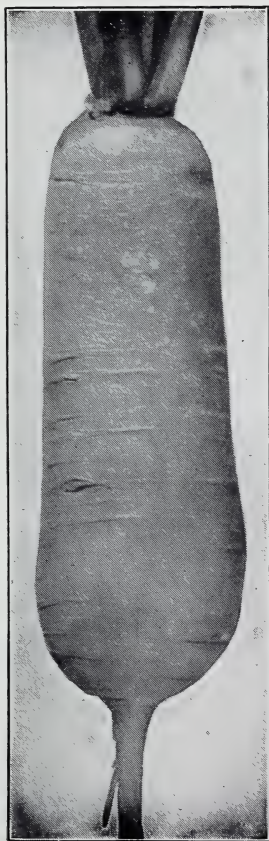
RADISH

	Tel. cipher	Per lb.	100 lbs. or more per lb.
Early Deep Scarlet Turnip.....	Malheur	\$.50	\$.45
Blood Red Turnip, Forcing.....	Mahaska	.50	.45
Early Scarlet Globe (See cut)	Manistee	.50	.45
Early Deep Scarlet, Olive Shaped.....	Maries	.50	.45
Early White Turnip.....	Martin	.50	.45
Early Scarlet Turnip.....	Marion	.45	.40
Early Scarlet Turnip, White Tipped.....	Marlboro	.45	.40
French Breakfast.....	Massac	.45	.40
Crimson Giant Turnip...	Maui	.45	.40
Icicle.....	Meyer	.45	.40
Half Long Deep Scarlet.....	Maverick	.50	.45
Long Brightest Scarlet, White Tipped....	Mayer	.45	.40
Long Scarlet	Meagher	.45	.40
Wood's Early Frame.....	Medina	.45	.40
Cincinnati Market.....	Meigs	.45	.40
Improved Chartier.....	Menifee	.45	.40
Early Golden Yellow Oval.....	Mercer	.50	.45
Long White Vienna.....	Mesa	.45	.40
Golden Globe.....	Mills	.50	.45
Large White Summer Turnip.....	Miner	.50	.45
White Strasburg.....	Millard	.45	.40
Early White Giant Summer.....	Midland		Sold out

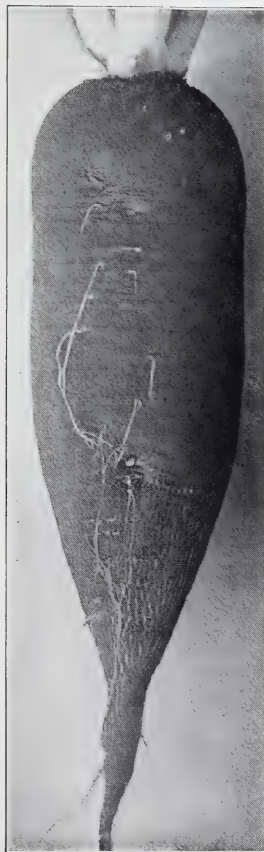
RADISH—Continued

WINTER VARIETIES

	Tel. cipher	Per lb.	100 lbs. or more per lb.
Scarlet China (<i>See cut</i>).....	Mitchell ..	\$.45	\$.40
Celestial. Roots long, cylindrical with beautiful white skin and flesh; quality excellent.....	Modoc50	.45
California Mammoth White China.....	Mono	Crop	Failed
Round Black Spanish.....	Monroe50	.45
Half Long Black Winter. Roots half long, grayish black; flesh white, crisp, pungent and well flavored (<i>See cut</i>).....	Montcalm	.55	.50
Long Black Spanish.....	Montour ..	.45	.40



Scarlet China



Half Long Black Winter

RHUBARB

	Tel. cipher	Per lb.	100 lbs. or more per lb.
Rhubarb or Pie Plant.....	Moore....	\$.75	\$.75
Rhubarb or Pie Plant Roots..	\$7.50 per 100.....	Morgan..	

ROQUETTE

A hardy annual used like mustard for salads.....	Morrison..	1.00	1.00
--	------------	------	------

SALSIFY or Vegetable Oyster

Mammoth Sandwich Island.....	Morton...	1.75	1.50
------------------------------	-----------	------	------

SORREL

Large Leaved French.....	Moultrie..	1.00	1.00
--------------------------	------------	------	------



Long Standing Bloomsdale

SPINACH

	Tel. cipher	Per lb.	10 lbs. or more per lb.	50 lbs. or more per lb.
Savoy Leaved or Bloomsdale.....	Murray...	\$.18	\$.15	\$.14
Long Standing Bloomsdale (New) (<i>See cut</i>)	Muse.....	.22	.18	.16
Broad Flanders.....	Nance ..	.17	.14	.13
Giant Thick Leaved (<i>Nobel</i>).....	Natrona..	.22	.18	.16
Juliana.....	Neal.....	.22	.20	.18
King of Denmark or Antvorskov. Un- doubtedly the most valuable introduc- tion of spinach in recent years.....	Neosho. .	22	20	18
Long Standing Prickly.....	Nepi....	17	14	13
New Zealand. (<i>Tetragonia</i>).....	Newberry.	50	45	45

SQUASH

SUMMER SORTS

See Pages 51 and 56 of our 1929 Seed Annual

	Tel. cipher	Per lb.	25 lbs. or more per lb.
Long Island White Bush	Noble	\$.60	\$.55
Early White Bush Scallop	Nicholas60	.55
Mammoth White Bush Scallop	Newton75	.65
Early Yellow Bush Scallop	Nolan60	.55
Mammoth Summer Crookneck	Nowata75	.65
Summer Crookneck	Nuckolls60	.55
Italian Vegetable Marrow (<i>Cocozella di Napoli</i>)	Nye	1.00	.90
English Vegetable Marrow	Nymph	1.00	.90



Delicious

AUTUMN AND WINTER SORTS

Table Queen or Des Moines	Oakes75	.70
Delicious (<i>See cut</i>)	Oceana60	.55
Boston Marrow	Ogle50	.45
Golden Hubbard	Okfuskee60	.55
Hubbard	Okmulgee60	.55

TOBACCO

	Tel. cipher	Per oz.	Per lb.
White Burley	Osborne	\$.25	\$ 2.50
Connecticut Seed Leaf	Overton25	2.50
Havana	Owsley25	2.50



Marglobe

TOMATO

	Tel. cipher	Per lb.	25 lbs. or more per lb.
Earliana	Oxford ...	\$ 3.50	\$ 3.25
Avon Early. The best extra early, scarlet fruited variety	Owyhee ...	3.50	3.25
John Baer. Extra early, scarlet fruited, hardy and productive. Shippers should try it	Ozark ...	2.50	2.25
Bonny Best	Panola ...	2.50	2.25
Chalk's Early Jewel	Page	2.50	2.25
Cooper's Special. A new semi-dwarf, purple fruited variety. Fruits globe shaped and very early maturing. Recommended as a good shipping sort	Palo	3.50	3.25
Gulf State Market. The earliest good purple tomato. Unequaled as a shipping sort	Paisley ...	3.50	3.25
Early Detroit	Pacific ...	3.50	3.25
Marglobe (<i>See cut</i>)	Padus ...	6.50	6.00
Acme. Known also as Essex Early Hybrid	Pamlico ..	2.25	2.15
Early Michigan	Parker ...	2.50	2.25
Livingston's Globe	Patrick ...	3.50	3.25
Beauty	Pawnee ...	2.50	2.25

TOMATO—Continued

	Tel. cipher	Per lb.	25 lbs. or more per lb.
Greater Baltimore	Pepin	\$2.50	\$2.25
Stone. Our stock is distinctly superior to most of that offered under this name; being more uniform, better colored and larger. (<i>See cut</i>)			
	Phelps	2.25	2.00
Ponderosa	Piatt	5.00	4.75
Dwarf Stone	Pike	5.00	4.75
Dwarf Champion	Pinal	5.00	4.75
Golden Queen	Platte	2.50	2.25
Peach	Piute	3.50	3.25
White Apple	Plymouth	2.50	2.25
Red Pear	Polk	3.50	3.25
Yellow Pear	Pontotoc	3.50	3.25
Yellow Plum	Portage	3.50	3.25
Red Cherry	Posey	3.50	3.25
Yellow Cherry	Powell	3.50	3.25
Yellow Husk or Ground Cherry	Prairie	3.50	3.25



Stone



Early Purple Top, Strap Leaved

TURNIP

WHITE FLESHED SORTS

	Tel. cipher	Per lb.	250 lbs. or more per lb.
Extra Early White Milan	Preble	\$.50	\$.45
Extra Early Purple Top Milan. Roots purple-red on upper portion, white below, smooth, flat; flesh mild, sweet and tender. Well adapted for forcing.	Presidio ..	.50	.45
White Egg. An early, oval or egg-shaped variety with smooth, clear white roots of medium size; flesh fine grained and sweet.	Prowers30	.28
Early White Flat Dutch, Strap Leaved. A most excellent early garden variety. Roots medium sized, flat; color white. Very early; sweet and tender. It is desirable for table use.	Pueblo25	.22
Early Purple Top, Strap Leaved. Very extensively used for the table. Roots flat, of medium size, purple or dark red above ground, white below. Flesh white, fine grained and tender. (<i>See cut</i>)	Putnam25	.22
Purple Top White Globe. The roots are of excellent quality and are suitable for the table as well as for stock feeding.	Queens30	.25

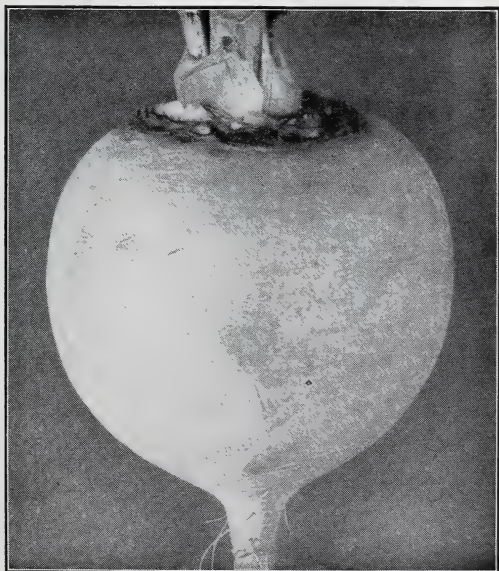
TURNIP—Continued

WHITE FLESHED SORTS

	Tel. cipher	Per lb.	250 lbs. or more per lb.
Cow Horn or Long White. Roots long, often twelve to fifteen inches; flesh fine grained and well flavored.....	Rabun	\$.25	\$.22
Large White Norfolk.....	Rains25	.22
Pomeranian White Globe.....	Ralls25	.22
Seven Top, <i>for turnip greens</i>	Ransom ..	.30	.28
Southern Prize	Ravall35	.32

YELLOW FLESHED SORTS

Large Amber Globe. Roots large, globular; skin clear yellow except the top which is tinged with green. Flesh light yellow, fine grained and sweet..	Ray35	.32
Yellow Globe.....	Redwood ..	.35	.32
Yellow Stone . Roots of medium size, globular; skin smooth, attractive pale yellow. Flesh crisp, very tender and of fine quality (<i>See cut</i>).....	Refugio35	.32
Orange Jelly or Golden Ball.....	Renville ..	.30	.28
Purple Top Yellow Aberdeen.....	Rhea30	.28



Yellow Stone

RUTA BAGA OR SWEDE

	Tel. cipher	Per lb.	250 lbs. or more per lb.
American Purple top or Improved Long Island	Richmond	\$.30	\$.25
Ferry's Improved Purple Top Yellow	Roanoke	.30	.25
Golden Neckless	Rooks	.40	.35
Hartley's Bronze Top	Rosa	.30	.25
Monarch or Tankard	Rich	.35	.30
Sweet Perfection White. Absolutely neckless	Sabine	.40	.38

AROMATIC, MEDICINAL AND POT HERBS

	Tel. cipher	Per lb.
Anise	Saginaw	\$ 1.00
Balm	Salem	2.50
Basil, Sweet	Saluda	1.00
Borage	Sanborn	1.50
Caraway	Sandoval	.40
Caraway, for flavoring	Sangamon	.35
Coriander	Saratoga	.40
Coriander, for flavoring	Sarpy	.35
Dill, Mammoth	Schley	.50
Dill, Common	Schurz	.40
Fennel, Sweet	Scotland	.60
Horehound	Screven	2.75
Hyssop	Searcy	3.50
Lavender	Seminole	2.00
Marjoram, Sweet	Sequoyah	1.00
Rosemary	Seward	3.75
Rue	Sharkey	3.50
Saffron	Shasta	1.00
Sage, Broad Leaf	Shawnee	1.25
Savory, Summer	Sheridan	.75
Thyme	Shoshone	2.00
Wormwood	Sierra	2.50

GRASS SEED

Prices are subject to fluctuations of the market. Not less than 1/2 lb. at pound rates nor less than 10 lbs. at 100 lb. rate. Terms net cash ten days.

	Tel. cipher	Per lb.	Per 100 lbs.
Blue Grass, Canadian, fancy cleaned; choicest grade . . .	Stone . . .	Market	price
Blue Grass, Kentucky, fancy cleaned; choicest grade . . .	Stewart . . .	"	"
Rye Grass, Perennial (<i>Pacey's short seeded</i>)	Stearns . . .	"	"
Red Top, Fancy (cleaned from chaff)	Snyder . . .	"	"
Fescue, Red or Creeping (<i>European</i>)	Stafford . .	"	"
Rough Stalked Meadow Grass	Staffman . .	"	"
South German Bent Grass	Stephens . .	"	"
Wood Meadow Grass	Story	"	"
Lawn Grass, Extra Fine Mixed	Stoddard . .	\$.55	\$50 .00
Lawn Grass, Fine Mixed	Stokes35	30.00
Lawn Grass, Shady Lawn Mixture	Stonewall . .	.65	60.00

CLOVER

	Tel. cipher	Per 100 lbs.
White Dutch, <i>choice</i>	Sutter	Market price

BIRD SEEDS

The seeds quoted below are for feeding purposes only, not for planting.

Canary, <i>re-cleaned</i>	Tompkins . .	Market price
Hemp	Toombs . . .	" "
Lettuce	Towner . . .	" "
Maw	Traill	" "
Rape	Trigg	" "
Mixed Bird Seed	Trinity . . .	" "

All prices on Bird Seeds are subject to fluctuations of the market. Not less than 10 Lbs. at 100 lb. rate. Terms net cash ten days.

A SELECTED LIST OF FLOWER SEEDS IN BULK

We will not sell less than 1 oz. of sorts priced at 20c per oz. or under but we will put up $\frac{1}{2}$ oz. of seeds priced at 25c per oz. and over; $\frac{1}{4}$ oz. of seeds priced at 75c per oz. and over; $\frac{1}{8}$ oz. of seeds priced at \$2.00 per oz. and over.

Not less than $\frac{1}{2}$ pound at the pound rate. Less than $\frac{1}{4}$ pound will be charged at the ounce rate.



Ageratum

	Per oz.	Per $\frac{1}{4}$ lb.	Per lb.
Acroclinium, Album.....	\$.20	\$.60	\$ 2.00
“ Roseum.....	.20	.60	2.00
“ Mixed.....	.15	.40	1.50
Afghan Gilliflower (<i>Erysimum Perofskianum</i>).....	.30	.90	3.00
Ageratum Mexicanum.....	.20	.60	2.00
“ Dwarf White.....	.30	.90	3.00
“ “ Blue.....	.30	.90	3.00
“ “ Mixed.....	.25	.75	2.50

	Per oz.	Per ¼ lb.	Per lb.
Alyssum, Carpet of Snow (Maritimum Procumbens)...	\$.35	\$ 1.00	\$ 3.50
“ Lilac Queen.....	.30	.90	3.00
“ Little Gem (Maritimum Compactum).....	.20	.60	2.00
“ Sweet (Maritimum).....	.15	.40	1.50
Amaranthus Caudatus.....	.10	.25	.75
“ Melancholicus Ruber.....	.15	.40	1.50
“ Tricolor (Joseph's Coat).....	.25	.75	2.50
Arabis, Alpina.....	.35		
Arctotis Grandis.....	.40		
Asparagus, Sprengeri.....	\$.80 per 1000 seeds		
Aster, Queen of the Market, Crimson.....	.60	1.75	6.00
“ “ “ “ “ Lavender.....	.60	1.75	6.00
“ “ “ “ “ Pink.....	.60	1.75	6.00
“ “ “ “ “ Purple.....	.60	1.75	6.00
“ “ “ “ “ Rose.....	.60	1.75	6.00
“ “ “ “ “ White.....	.60	1.75	6.00
“ “ “ “ “ Mixed.....	.50	1.40	5.00
“ King, Crimson.....	.80	2.25	8.00
“ “ Lavender.....	.80	2.25	8.00
“ “ Pink.....	.80	2.25	8.00
“ “ Rose.....	.80	2.25	8.00
“ “ Violet.....	.80	2.25	8.00
“ “ White.....	.80	2.25	8.00
“ “ Mixed.....	.80	2.25	8.00
“ Giant Crego or Comet, Crego Pink.....	.80	2.25	8.00
“ “ “ “ “ Crimson.....	.80	2.25	8.00
“ “ “ “ “ Lavender.....	.80	2.25	8.00
“ “ “ “ “ Purple.....	.80	2.25	8.00
“ “ “ “ “ Rose.....	.80	2.25	8.00
“ “ “ “ “ White.....	.80	2.25	8.00
“ “ “ “ “ Mixed.....	.60	1.75	6.00
“ Ferry's Late Branching, Crimson.....	.70	2.00	7.00
“ “ “ “ “ Heart of France.....	.70	2.00	7.00
“ “ “ “ “ Lavender.....	.70	2.00	7.00
“ “ “ “ “ Lavender Pink.....	.70	2.00	7.00
“ “ “ “ “ Peerless Pink.....	.70	2.00	7.00
“ “ “ “ “ Purple.....	.70	2.00	7.00
“ “ “ “ “ Silvery Pink.....	.70	2.00	7.00
“ “ “ “ “ Tyrian Rose.....	.70	2.00	7.00
“ “ “ “ “ White.....	.70	2.00	7.00
“ “ “ “ “ Mixed.....	.60	1.75	6.00
“ Finest Mixed.....	.50	1.40	5.00
Australian Pea Vine.....	.30	.90	3.00
Balloon Vine (Cardiospermum halicacabum).....	.10	.30	1.00
Balsam, Double or Camellia Flowered, Pure White.....	.30	.90	3.00
“ “ “ “ “ Dark Red.....	.30	.90	3.00
“ “ “ “ “ Solferino.....	.25	.75	2.50
“ “ “ “ “ Dwarf Mixed.....	.25	.75	2.50
“ “ “ “ “ Tall Mixed.....	.20	.60	2.00
Calendula, Double Orange King.....	.15	.40	1.50
“ “ “ Lemon Queen.....	.15	.40	1.50
“ “ “ Meteor.....	.15	.40	1.25
“ “ “ Trianon.....	.15	.40	1.25
“ “ “ Mixed.....	.10	.30	1.00



Calendula

	Per oz.	Per ¼ lb.	Per lb.
Canary Bird Flower.....	\$.20	\$.60	\$ 2.00
Candytuft, Fragrant White.....	.15	.40	1.50
“ Lilac.....	.20	.60	2.00
“ Purple.....	.20	.60	2.00
“ Rose Carmine.....	.20	.60	2.00
“ White.....	.20	.60	2.00
“ Giant Hyacinth Flowered White.....	.20	.60	2.00
“ Rocket (Giant Empress).....	.10	.30	1.00
“ Fine mixed.....	.20	.60	2.00
Canna, finest large-flowering, mixed.....	.20	.60	2.00
Canterbury Bell, Double Blue.....	1.00	2.75	10.00
“ “ “ Rose.....	1.00	2.75	10.00
“ “ “ White.....	1.00	2.75	10.00
“ “ “ Mixed.....	1.00	2.75	10.00
“ “ Single Mixed.....	.20	.60	2.00
“ “ Calycanthea Mixed.....	1.25		
Cardinal Climber.....	.50	1.40	5.00
Carnation, Double Perpetual Flowered.....	1.50		
“ Double Picotee Fine Mixed.....	1.25	3.25	12.00
“ Double Choice Mixed.....	1.00	2.75	10.00



Celosia Childsi

	Per oz.	Per ¼ lb.	Per lb.
Carnation, Grenadin, Double White	\$ 1.50		
“ “ “ Red	1.50		
“ Marguerite, finest mixed60	\$ 1.75	\$ 6.00
“ Double dwarf Vienna, mixed, early flowering	1.00	2.75	10.00
Castor Bean, Sanguineus10	.25	.75
“ “ Zanzibariensis10	.25	.75
“ “ Mixed10	.25	.75
Celosia Childsi, Crimson	1.00	2.75	10.00
“ “ Yellow	2.00		
“ Golden Plume60	2.00	7.00
“ Triumph of the Exposition60	2.00	7.00
“ Pyramidalis Plumosa Mixed30	.90	3.00
“ Cristata (Cockscomb) Dwarf Rose	2.50		
“ “ “ “ Yellow	2.50		
“ “ “ “ Giant Empress	2.50		
“ “ “ “ Glasgow Prize	2.50		
“ “ “ “ Mixed	1.50	4.00	15.00
Centaurea Cyanus (Bachelor's Button) mixed10	.30	1.00
“ “ Double Blue25	.75	2.50
“ “ White30	.90	3.00
“ “ “ Mixed (Bachelor's Button)20	.60	2.00
“ Imperialis, Amaranth Red60		
“ “ Lavender, Purple, White45	1.25	4.50

	Per oz.	Per ¼ lb.	Per lb.
Centaurea, Imperialis, Mixed	\$.35	\$ 1.00	\$ 3.50
“ Suaveolens, Yellow	.45	1.25	4.50
“ Gymnocarpa	.35	1.00	3.50
Chinese Forget-Me-Not	.40	1.10	4.00
Chrysanthemum, Evening Star	.20		
“ White Gloria	.20		
“ Carinatum Eclipse	.20		
“ “ Mixed	.15	.40	1.50
“ Coronarium Double White	.20		
“ “ “ Yellow	.20		
“ “ “ Mixed	.15	.40	1.50
“ Mixed	.15	.40	1.50
Clarkia, Double Mixed	.30	.90	3.00
Cobaea Scandens, violet-blue	.40	1.10	4.00
Columbine (Aquilegia) Coerulea Hybrida	1.50		
“ “ Californica hybrida	2.00		
“ “ Single Mixed	.50	1.40	5.00
“ “ Double Mixed	.50	1.40	5.00
Coreopsis or Calliopsis, Tinctoria, fine mixed	.10	.30	1.00
“ “ “ Golden Ray	.45		
“ “ “ Hybrida Double Mixed	.20	.60	2.00
“ “ “ Lanceolata Grandiflora	.20	.60	2.00
Cosmos, Early Flowering, Crimson	.20	.60	2.00
“ “ “ Pink	.20	.60	2.00
“ “ “ White	.20	.60	2.00
“ “ “ Mixed	.15	.40	1.50
“ “ “ Double Crested Mixed	1.50		
“ Hybrida, Giant White	.20	.60	1.75
“ “ “ Pink	.20	.60	1.75
“ “ “ Mixed	.10	.30	1.00
Cypress Vine (Ipomoea quamoclit) Scarlet	.15	.55	1.75
“ “ “ “ White	.15	.55	1.75
“ “ “ “ Mixed	.15	.40	1.50
Dahlia, finest double mixed	1.75	4.75	18.00
“ “ single mixed	.40	1.10	4.00
Daisy, Double Rose (<i>Longfellow</i>)	1.50		
“ “ White	1.50		
“ “ Mixed	1.25		
Datura Wrightii	.20	.60	2.00
“ Chlorantha fl. pl., double yellow	.20	.60	2.00
“ Mixed	.20	.60	2.00
Didiscus Coeruleus	.60	1.75	6.00
Dimorphoteca Aurantiaca	.60	1.75	6.00
Dwarf Morning Glory (<i>Convolvulus minor</i>), Mixed	.10	.20	.50
Eschscholtzia, Aurantiaca (<i>True California Poppy</i>)	.15	.40	1.25
“ Carmine King	.40	1.10	4.00
“ Mandarin	.25	.75	2.50
“ Mikado	.40	1.10	4.00
“ Scarlet Beauty	1.50	4.50	15.00
“ White	.15	.40	1.25
“ Mixed, finest colors	.15	.40	1.25
“ Bush (<i>Hunnemannia</i>)	.50	1.40	5.00
Euphorbia Marginata	.25	.75	2.50
Forget-Me-Not, Blue (<i>Myosotis Alpestris</i>)	.30	.90	3.00
“ “ “ Dissitiflora	2.25		

	Per oz.	Per ¼ lb.	Per lb.
Four O'Clock (Mirabilis, Marvel of Peru) Red	\$.10	\$.30	\$ 1.00
“ “ White, Red Striped	.10	.30	1.00
“ “ White	.10	.30	1.00
“ “ Mixed	.10	.25	.80
Foxglove (Digitalis) Ivory's Spotted	.40	1.10	4.00
“ “ fine mixed	.35	1.00	3.50
“ “ Campanulata Monstrosa, mixed	.60	1.75	6.00
French Honeysuckle, Coronarium, Scarlet	.30		
“ “ “ Album	.30		
Gaillardia, Grandiflora	.50		
“ Picta	.20	.60	2.00
“ Picta Lorenziana	.25	.75	2.50
Globe Amaranth, Purple	.15	.40	1.50
“ “ White	.15	.40	1.50
“ “ Striped	.15	.40	1.50
“ “ Mixed	.10	.30	1.00
Godetia, fine mixed	.20	.60	2.00
Gourds, Apple shaped, early	.15	.40	1.25
“ Bottle	.15	.40	1.25
“ Calabash	.15	.40	1.25
“ Corsican	.15	.40	1.25
“ Dish Cloth	.15	.40	1.25
“ Hercules' Club	.15	.40	1.25
“ Japanese Nest Egg	.15	.40	1.25
“ Orange (Mock orange)	.15	.40	1.25
“ Pear shaped, Striped	.15	.40	1.25
“ Powder Horn	.15	.40	1.25
“ Siphon or Dipper	.15	.40	1.25
“ Mixed	.10	.30	1.00
Gypsophila, Elegans Large Flowering Pure White	.10	.30	1.00
“ “ Mixed	.10	.30	1.00
“ Paniculata Double White	4.00		
Helichrysum monstrosum, largest double mixed	.40	1.10	4.00
Heliotrope, Dark Varieties mixed, very choice	1.00	2.75	10.00
Hibiscus Africanus	.20	.60	2.00
Hollyhock, Early Flowering Mixed	.75	2.00	7.50
“ Double Blood Red	1.00		
“ “ Lemon Yellow	1.00		
“ “ Deep Rose	1.00		
“ “ Pink	1.00		
“ “ Salmon	1.00		
“ “ Pure White	1.00		
“ “ Mixed	.75	2.00	7.50
Humulus Japonicus (Japanese Hop)	.25	.75	2.50
Hyacinth Bean (Dolichos lablab) Alba, White	.15	.40	1.25
“ “ “ “ Purpurea, purple	.15	.40	1.25
“ “ “ “ Mixed	.10	.25	.75
Ice Plant, (Mesembryanthemum crystallinum)	.20	.60	2.00
Ipomoea, Bona Nox (Evening Glory)	.15	.40	1.25
“ Coccinea (Star Ipomoea)	.15	.40	1.25
“ Limbata, mixed	.15	.40	1.25
“ Setosa (Brazilian Morning Glory)	.25	.75	2.50
“ Fine Mixed	.15	.40	1.50
“ Early Flowering Sky Blue	.50		
Job's Tears (Coix lachryma)	.10	.15	.40



Annual Larkspur

	Per oz.	Per ¼ lb.	Per lb.
Kochia Childsi.....	\$.10	\$.25	\$.75
Kudzu Vine.....	.25	.75	2.50
Lantana French Hybrids.....	.30		
Larkspur, Double tall stock flowered, Dark Blue.....	.50		
" " " " " Lustrous Carmine.....	.60		
" " " " " Shell Pink.....	.50		
" " " " " Sky Blue.....	.50		
" " " " " White.....	.40		
" " " " " Mixed.....	.30	.90	3.00
" (Delphinium) Belladonna.....	2.00		
" " Bellamosum.....	2.00		
" " Hybrid Large Flowering Mixed.....	1.00	2.75	10.00
Linum grandiflorum, rubrum (Scarlet Flax).....	.15	.40	1.50
Lobelia Erinus, True Blue.....	1.00	2.75	10.00
" " Queen of the Whites.....	1.00		
" " Crystal Palace.....	1.00		
" " Gracilis.....	.70	2.00	7.00

	Per oz.	Per ¼ lb.	Per lb.
Love-in-a-mist (Nigella Damascena) Double Blue.....	\$.10	\$.30	\$ 1.00
Lupin Cruikshanki.....	.15	.40	1.50
Marigold African, double tall, Lemon Queen.....	.60	1.75	6.00
“ “ “ “ Orange Prince.....	.60	1.75	6.00
“ “ “ “ Mixed.....	.35	1.00	3.50
“ French Double Dwarf Golden Ball.....	.30	.90	3.00
“ “ “ “ Gold Striped.....	.35	1.00	3.50
“ “ “ “ Pale Yellow.....	.30	.90	3.00
“ “ “ “ Mixed.....	.30	.90	3.00
“ “ Legion of Honor.....	.25	.75	2.50
“ “ Single Pumila.....	.50		
Matricaria, Exima Grandiflora Fl. Pl.....	1.00		
Maurandia mixed.....	2.50		
Mignonette, Goliath Red.....	.75	2.25	7.50
“ Machet.....	.20	.60	2.00
“ White.....	.80		
“ Sweet (Reseda odorata grandiflora).....	.10	.30	1.00
Mimulus Punctatus (Monkey Flower).....	2.50		
Momordica Charantia (Balsam Pear).....	.25	.75	2.50
“ Balsamina (Balsam Apple).....	.25	.75	2.50
Moon Flower (Ipomoea Grandiflora Alba).....	.25	.75	2.50
Morning Glory, (Convolvulus major) Striped.....	.10	.25	.80
“ “ “ “ White.....	.10	.25	.80
“ “ “ “ Blue.....	.10	.25	.80
“ “ “ “ Purple.....	.10	.25	.80
“ “ “ “ Crimson.....	.10	.25	.80
“ “ “ “ Mixed.....	.15	.50	
“ “ Aurora.....	.10	.30	1.00
“ “ Giant Japanese, Extra Select mixed... ..	.10	.25	.90
Mourning Bride (Scabiosa) double, Blue.....	.35	1.00	3.50
“ “ “ “ Maroon.....	.35	1.00	3.50
“ “ “ “ Pink.....	.35	1.00	3.50
“ “ “ “ Red.....	.35	1.00	3.50
“ “ “ “ White.....	.35	1.00	3.50
“ “ “ “ Yellow.....	.35	1.00	3.50
“ “ “ “ Mixed.....	.30	.90	3.00

NASTURTIUMS

Dwarf Varieties

(*Tropaeolum minor*)

	Per oz.	Per ¼ lb.	Per lb.
Aurora.....	\$.10	\$.25	\$.80
Bronze Colored.....	.10	.25	.80
Crimson.....	.10	.25	.80
Empress of India.....	.10	.30	.90
King Theodore.....	.10	.30	.90
Pearl.....	.10	.25	.80
Rose.....	.10	.30	.90
Scarlet.....	.10	.25	.80
Schilling's Striped.....	.10	.30	1.00



Giant Flowered Pansies

NASTURTIUMS-Continued

Dwarf Varieties

(*Tropaeolum minor*)

	Per oz.	Per $\frac{1}{4}$ lb.	Per lb.
Yellow.....	\$.10	\$.25	\$.80
Mixed. (Tel. Cipher Itawa).....	.10	.20	.50

Trailing Varieties

(*Tropaeolum Lobbianum*)

Bright Yellow.....	.10	.25	.80
Brilliant.....	.10	.25	.80
Chestnut Brown.....	.10	.25	.80
Giant of Battles.....	.10	.25	.80
Hemisphaericum.....	.10	.25	.80
Jupiter.....	.10	.25	.80
King of the Blacks.....	.10	.25	.80
Light Yellow, with maroon stain.....	.10	.25	.80
Queen Wilhelmina.....	.10	.25	.80
Rose.....	.10	.25	.80
Spitfire.....	.10	.25	.80
Mixed. (Tel. Cipher Izard).....	.10	.20	.50
Madame Gunter's Hybrids.....	.10	.25	.80
Dwarf Chameleon.....	.10	.25	.80
Trailing ".....	.10	.25	.80
Nemesia, Suttoni Grandiflora Mixed.....	1.50		
Nicotiana Affinis.....	.20	.60	2.00
" " Mixed.....	.30		
" Sanderae Mixed.....	.40		

PANSIES

Pansy, Ferry's Superbissima Blotched.....	2.25		
" Giant Flowering Parisian, mixed.....	1.00	3.80	14.00
" " Trimardeau, Mixed.....	1.00	3.25	12.00
" " Flowering, Extra Choice Mixed.....	1.75	5.00	17.50
" Choice Mixed.....	.80	2.20	8.00
" Giant Black.....	1.25	3.50	12.50
" " Bronze.....	1.25	3.50	12.50
" " Light Blue.....	1.25	3.50	12.50
" " Mahogany.....	1.25	3.50	12.50
" " White.....	1.25	3.50	12.50
" " Wine Colored.....	1.25	3.50	12.50
" " Yellow.....	1.25	3.50	12.50
" Lord Beaconsfield.....	1.25	3.50	12.50
" Navy Blue.....	1.25	3.50	12.50
Peas, Everlasting.....	.50	1.40	5.00
Petunia, Hybrida Dwarf, Rosy Morn.....	2.00		
" " " White.....	1.50		
" " " Mixed.....	1.00	3.75	14.00
" " General Dodds.....	1.00		
" " Lord Courtenay.....	1.50		
" " Violet King.....	1.50		
" " White.....	1.00		
" " Finest Striped and Blotched.....	.75	2.25	7.50
" " Choice Mixed.....	.40	1.25	4.00
" " Large Flowering Mixed.....	7.50		

	Per oz.	Per ¼ lb.	Per lb.
Phlox Drummondii, large flowering, Alba, pure white...	\$.70	\$2.00	\$ 7.00
" " " " Black Warrior, deep maroon.....	.70	2.00	7.00
" " " " Isabellina, creamy yellow.....	.70	2.00	7.00
" " " " Kermesina alba oculata.....	.70	2.00	7.00
" " " " Lilac.....	.70	2.00	7.00
" " " " Rosea, rose with distinct eye.....	.70	2.00	7.00
" " " " Rosy Chamois.....	.70	2.00	7.00
" " " " Scarlet.....	.70	2.00	7.00
" " " " Splendens, crimson, pure white eye..	.70	2.00	7.00
" " " " Violet.....	.70	2.00	7.00
" " " " Extra choice mixed.	.50	1.40	5.00
Pink, Single Crimson.....	.50		
" " White.....	.40		
" " White Marbled Rose.....	.50		
" Royal Pinks.....	.50		
" Heddewig's Finest Single Mixed.....	.25	.75	2.50
" " Double Diadem Mixed.....	.50	1.40	5.00
" Double Japan Mixed (Dianthus laciniatus fl. pl.)	.50	1.40	5.00
" China, double mixed (Dianthus Chinensis).....	.30	.85	3.00
Poppy, American Legion.....	.35	1.00	3.50
" Shirley, extra fine mixed.....	.15	.40	1.50
" Ryburgh Hybrid.....	.50	1.40	5.00
" Tulip Flowered (Papaver glaucum).....	.40	1.10	4.00
" Single Mixed.....	.10	.30	1.00
" Double Fringed Carnation, Red.....	.15	.40	1.50
" " " " White.....	.15	.40	1.50
" " " " Mixed.....	.10	.25	.80
" " Paeony, White.....	.20	.55	1.80
" " " Red.....	.20	.55	1.80
" " " Mixed.....	.10	.25	.75
" " Choice Mixed.....	.10	.25	.75
" Orientale.....	.80	2.25	8.00
" " Hybrids Mixed.....	1.00	2.75	10.00
Portulaca Single, Orange.....	.50		
" " Scarlet.....	.50		
" " White.....	.50		
" " Fine Mixed.....	.40	1.10	4.00
" Double Mixed.....	1.25	3.50	12.50
Primrose, Evening, Lamarckiana.....	.20		
Pyrethrum, Parthenifolium Aureum.....	.25		
Rhodanthe, Rose.....	.40	1.10	4.00
" White.....	.40	1.10	4.00
" Mixed.....	.40	1.10	4.00
Rocket, Purple.....	.30		
" White.....	.30		
Rose, Multiflora.....	2.00		
Salpiglossis, fine mixed, hybrid varieties.....	.75	2.00	7.50
Salvia Splendens (Flowering Sage).....	1.50	4.75	18.00
" Bonfire.....	1.50	4.75	18.00
Scarlet Runner Beans.....			.20
Schizanthus Retusus Mixed.....	1.00		

	Per oz.	Per ¼ lb.	Per lb.
Sensitive Plant (<i>Mimosa Pudica</i>).....	\$.25	\$.90	\$2.50
Shasta Daisy.....	.50	1.40	5.00
Smilax.....	.30	.90	3.00
Snapdragon, Semi-Dwarf Maroon.....	.50		
“ “ “ Pink.....	.50		
“ “ “ Scarlet.....	.50		
“ “ “ White.....	.50		
“ “ “ Yellow.....	.50		
“ “ “ Mixed.....	.50	1.40	5.00
“ Tall Large Flowering, White.....	.45	1.25	4.50
“ “ “ Yellow.....	.45	1.25	4.50
“ “ “ “ Pink.....	.45	1.25	4.50
“ “ “ “ Garnet.....	.45	1.25	4.50
“ “ “ “ Scarlet.....	.45	1.25	4.50
“ “ “ “ Fine Mixed.....	.40	.90	4.00
Statice, Sinnuata Mixed.....	.25	.75	2.50
Stock, Beauty of Nice, Crimson.....	1.75	5.00	17.50
“ “ “ “ Deep Blue.....	1.75	5.00	17.50
“ “ “ “ Rose.....	1.75	5.00	17.50
“ “ “ “ Rosy Lilac.....	1.75	5.00	17.50
“ “ “ “ White.....	1.75	5.00	17.50
“ “ “ “ Yellow.....	1.75	5.00	17.50
“ “ “ “ Mixed.....	1.00	2.75	10.00
“ Double Ten Weeks, Blood Red.....	1.75	5.00	17.50
“ “ “ “ Bright Pink.....	1.75	5.00	17.50
“ “ “ “ Purple.....	1.75	5.00	17.50
“ “ “ “ White.....	1.75	5.00	17.50
“ “ “ “ Yellow.....	1.75	5.00	17.50
“ “ “ “ Mixed.....	.75	2.25	8.00
Sunflower, Red and Gold. (<i>Gaillardia Flowered</i>).....	.25	.75	2.50
“ Double Golden.....	.15	.40	1.50
“ Stella.....	.20	.60	2.00
Sweet Peas, see pages 44, 45, 46, 47.			
Sweet William, Newport Pink.....	.50		
“ “ Velvet Maroon.....	.25	.75	2.50
“ “ Pure White.....	.25	.75	2.50
“ “ (<i>Dianthus barbatus</i>) Single Mixed, fine.....	.20	.60	2.00
“ “ “ “ Double Mixed, extra.....	.40	1.10	4.00
Texas Blue Bonnet.....	.25	.90	2.50
Verbena hybrida, Scarlet.....	1.00	2.75	10.00
“ “ Dark Blue.....	1.00	2.75	10.00
“ “ Pink.....	1.50	4.00	15.00
“ “ White, large.....	1.00	2.75	10.00
“ “ Italian Striped.....	1.25	3.50	12.50
“ “ Fine Mixed, extra choice strain.....	.70	2.00	7.00
Vinca, Pure White.....	.60	1.75	6.00
“ Rosea Alba.....	.60	1.75	6.00
“ Rosea.....	.60	1.75	6.00
“ Mixed.....	.50	1.40	5.00
Wallflower, Early Brown.....	.25	.75	2.50
“ Mixed Double, extra fine.....	1.75		
Wistaria Chinensis.....	.40		

	Per oz.	Per ¼ lb.	Per lb.
Zinnia, Giant Double, Crimson.....	\$.60	\$1.75	\$ 6.00
“ “ “ Canary Yellow.....	.60	1.75	6.00
“ “ “ Orange.....	.60	1.75	6.00
“ “ “ Pink.....	.60	1.75	6.00
“ “ “ Purple.....	.60	1.75	6.00
“ “ “ Scarlet.....	.60	1.75	6.00
“ “ “ White.....	.60	1.75	6.00
“ “ “ Mixed.....	.40	1.10	4.00
“ Dahlia Flowered Mixed.....	1.50	4.75	18.00
“ Lilliput Double Mixed.....	.50	1.40	5.00
“ Mexicana Double Orange.....	.70		
“ “ Single Gypsy Girl.....	1.50		

SWEET PEAS

Our stocks are absolutely unsurpassed in selection, purity and vitality.

Not less than one-half pound at pound rate. Less than one-fourth pound will be charged at the ounce rate.

SPRING FLOWERING SPENCER

	Tel. cipher	Per oz.	Per ¼ lb.	Per lb.
Early Aviator.....	Walstead.	\$.30	\$.90	\$ 3.00
“ Blanche Ferry.....	Wakita...	.30	.90	3.00
“ Blue Bird.....	Waldrip..	.30	.90	3.00
“ Columbia.....	Walhond..	.30	.90	3.00
“ Eldorado.....	Wales... .	1.00	2.75	10.00
“ Glitters.....	Walford..	.30	.90	3.00
“ Harmony.....	Walsh... .	.30	.90	3.00
“ Snowflake.....	Weak.....	.30	.90	3.00
“ Superior Pink.....	Webb.....	.80	2.25	8.00
“ Vulcan.....	Weir.....	.45	1.40	4.50
“ Zvolanek's Rose.....	Wilborn..	.30	.90	3.00
Early Flowering Spencer, Mixed, a choice mixture of the best early flowering varieties.....	Wauneta.	.20	.60	2.00

SWEET PEAS—Continued

Our stocks are absolutely unsurpassed in selection, purity and vitality.

Not less than one-half pound at pound rate. Less than one-fourth pound will be charged at the ounce rate.

SPENCER VARIETIES

BICOLOR, LIGHT

	Tel. cipher	Per oz.	Per ¼ lb.	Per lb.
Blanche Ferry Spencer.....	Tulare...	\$.15	\$.40	\$1.50
Dora.....	Yadkin...	.15	.50	1.75

BLUE

Mrs. Tom Jones.....	Wellen...	.15	.40	1.50
---------------------	-----------	-----	-----	------

BLUE, LIGHT

Gleneagles.....	Wolco....	.50	1.40	5.00
-----------------	-----------	-----	------	------

BLUE, DARK

Fortune.....	Woods....	.50	1.40	5.00
--------------	-----------	-----	------	------

BLUSH PINK

Valentine.....	Wellham..	.15	.45	1.60
----------------	-----------	-----	-----	------

CARMINE

Doreen.....	Washoe... .	.25	.75	2.50
-------------	-------------	-----	-----	------

CERISE, PALE

Illuminator.....	Ward.....	.15	.40	1.50
------------------	-----------	-----	-----	------

CERISE, DEEP

Charming.....	Welling... .	.20	.60	2.00
---------------	--------------	-----	-----	------

CERISE, SCARLET

Campfire.....	Wellston..	.25	.75	2.50
---------------	------------	-----	-----	------

Royal Scot.....	Yale.....	.15	.40	1.50
-----------------	-----------	-----	-----	------

CREAM

Dobbie's Cream.....	Wasatch..	.15	.40	1.60
---------------------	-----------	-----	-----	------

CREAM PINK, PALE

Mary Pickford.....	Yost.....	.20	.60	2.00
--------------------	-----------	-----	-----	------

Picture.....	Weirz.....	.15	.45	1.60
--------------	------------	-----	-----	------

CREAM PINK, DEEP

Miss California.....	Welfare... .	.20	.60	2.00
----------------------	--------------	-----	-----	------

CRIMSON

Crimson King.....	Walton... .	.15	.55	1.80
-------------------	-------------	-----	-----	------

King Edward.....	Watauga..	.15	.40	1.50
------------------	-----------	-----	-----	------

LAVENDER

Austin Frederick.....	Yakima... .	.15	.40	1.50
-----------------------	-------------	-----	-----	------

MAROON, DARK

Warrior.....	Yell.....	.15	.40	1.50
--------------	-----------	-----	-----	------

ORANGE PINK

George Shawyer.....	Wallace... .	.15	.45	1.60
---------------------	--------------	-----	-----	------

(See Page 46 for mixture of Spencer sweet peas)

SWEET PEAS—Continued

Our stocks are absolutely unsurpassed in selection, purity and vitality.

Not less than one-half pound at pound rate. Less than one-fourth pound will be charged at the ounce rate.

SPENCER VARIETIES—Continued

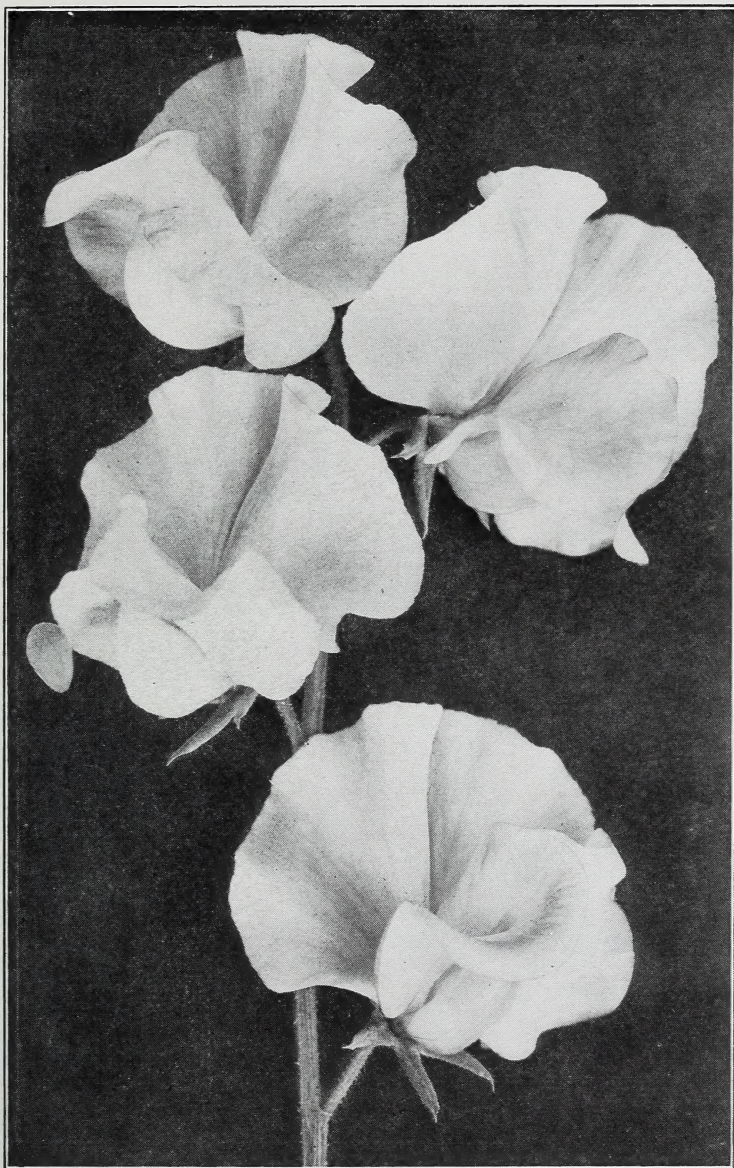
	Tel. cipher	Per oz.	Per ¼ lb.	Per lb.
ORANGE SCARLET				
Mammoth.....	Yetter....	\$.15	\$.50	\$1.60
PICOTEE EDGED, PINK				
Youth.....	Washita..	.25	.75	2.50
PINK, PALE				
Elfrida Pearson.....	Waskom..	.20	.55	1.75
PINK, CLEAR				
Countess.....	Vance....	.15	.40	1.50
PINK, DEEP				
Hawlmark Pink.....	Welona...	.15	.40	1.50
PURPLE				
Royal Purple.....	Waukon..	.15	.40	1.50
ROSE				
Rosabelle.....	Waupun..	.15	.40	1.50
SALMON				
Tangerine Improved.....	Wecota...	.20	.60	2.00
SCARLET				
Sunproof Scarlet.....	Wehrum..	.15	.45	1.60
STRIPED AND FLAKED				
Senator.....	Wagoner..	.15	.40	1.50
WHITE				
King White.....	Weld....	.15	.40	1.50
Constance Hinton.....	Twiggs...	.15	.50	1.75

SPENCERS MIXED. In this splendid mixture will be found a wide range of colors of this comparatively new class. The flowers are of remarkably large size and wonderfully attractive form.

Tel. cipher Young. Per oz. 10c; Per lb. \$0.70

FERRY'S SUPERB SPENCERS MIXED. We make up this magnificent mixture by combining separate named Spencer varieties, each of which our trials have repeatedly shown to be the very best of its class. Unsurpassed as a mixture of this superb class and showing the most desirable range of colors and the finest forms. No better mixture in all the world than this.

Tel. cipher Zora. Per oz. 15c; Per lb. \$1.25



Spencer Sweet Peas

We Have Discontinued The Sale of Planet Junior and Other Garden Tools

SEED BAGS

We annually manufacture for our own use millions of Seed Bags and are in a position to offer to the trade first quality ready made bags at prices as reasonable as the same grade of goods can be purchased anywhere.

Samples of all sizes furnished on application.

Printing Extra, at Cost

			Per 1000
No. 1	Miniature Pockets, Canary	$\frac{7}{8}$ x $1\frac{3}{4}$ inches	\$.75
" 3	White Coated Paper	$2\frac{1}{8}$ x $3\frac{3}{4}$ "	.85
" 7	" " "	$3\frac{1}{8}$ x $4\frac{1}{2}$ "	1.50
" 12	" " "	1 oz. 4 x $4\frac{3}{4}$ "	2.50
" 11	Manila, Gummed	$\frac{1}{2}$ oz. $2\frac{1}{4}$ x $3\frac{1}{2}$ "	1.00
" 13	" " "	1 oz. $2\frac{1}{2}$ x $4\frac{1}{4}$ "	1.25
" 15	" " "	2 oz. $3\frac{1}{8}$ x $5\frac{1}{2}$ "	1.50
" 33	Brown "Kraft" Paper	1 pint. 5 x $7\frac{1}{2}$ "	4.50
" 36	" " "	1 pound. $5\frac{1}{2}$ x 8 "	5.00
" 39	" " "	1 quart. $6\frac{1}{2}$ x $9\frac{1}{4}$ "	6.00
" 42	" " "	3 pints. $7\frac{1}{2}$ x $10\frac{1}{4}$ "	7.00
" 45	" " "	2 quarts. $8\frac{1}{2}$ x $11\frac{1}{4}$ "	8.00
" 48	" " "	3 quarts. $9\frac{1}{2}$ x $12\frac{1}{2}$ "	10.00
" 51	" " "	4 quarts. $10\frac{1}{2}$ x $14\frac{1}{2}$ "	12.50
" 54	" " "	6 quarts. $11\frac{3}{4}$ x $16\frac{1}{4}$ "	15.00
" 57	" " "	8 quarts. 13 x 18 "	17.00

Bags Nos. 1 to 15 have flaps; only Nos. 11 13 and 15 are gummed

TELEGRAPHIC CIPHER

By making use of the following Telegraphic words for weights, together with the Telegraphic Cipher attached to each article in this list, our customers will be able to order by wire at trifling expense. The Telegraphic words for QUANTITIES must always PRECEDE the cipher words for Seeds, but if the same quantity of several articles is needed, the word for that quantity should be placed before the word for the first article only. For example:

“**Freight Adjust Lagrange, Lemhi, Lorain.**” Means “Ship by first freight One Hundred Pounds each of Extra Early, Telephone and Champion of England Peas.”

“**Express Abort Caddo, Cannon, Catoosa.**” Means “Send by first express Two Pounds each of Early Jersey Wakefield, Early Winnigstadt and Ferry’s Premium Late Flat Dutch Cabbage.”

TELEGRAPHIC WORDS FOR WEIGHTS

Quantity	POUNDS	Quantity	POUNDS	Quantity	POUNDS
1/4	Abhor	75	Adjoin	725	Agnate
1/2	Abide	80	Adjourn	750	Alarm
3/4	Abolish	85	Adjudge	775	Albeit
1	Abound	90	Adjunct	800	Alcove
2	Abort	95	Adjure	825	Alert
3	Abrade	100	Adjust	850	Alight
4	Abrupt	120	Admis	875	Allay
5	Abrogate	125	Admire	900	Allege
6	Abscond	150	Admit	925	Alloy
7	Absent	175	Admix	950	Allude
8	Absolve	180	Adobe	975	Allure
9	Absorb	200	Adopt	1000	Alpaca
10	Abstain	225	Adore	1200	Almond
11	Abstract	240	Adolescent	1500	Alpine
12	Absurd	250	Adrift	1800	Alms
13	Abuse	275	Adult	2000	Alter
14	Accede	300	Advantage	2400	Alum
15	Accent	325	Advent	2500	Alvine
16	Acclaim	350	Adverse	3000	Amass
17	Access	360	Aerolite	3500	Amaze
18	Accost	375	Aerial	4000	Ambush
19	Account	400	Affect	4500	Amend
20	Accredit	420	Affair	5000	Amenity
21	Accuracy	425	Affirm	5500	Amiss
22	Accuse	450	Affix	6000	Ample
23	Acquaint	475	Afford	6500	Amuse
24	Acquire	480	Affiant	7000	Analyze
25	Acquit	500	Affray	7500	Anchor
30	Actuate	525	Affront	8000	Ancient
35	Acute	540	Afflux	8500	Adroid
40	Adage	550	Afloat	9000	Angler
45	Adapt	575	Afoot	9500	Anile
50	Addict	600	Afore	10000	Anthem
55	Addle	625	Afraid	15000	Antic
60	Adduce	650	Against	20000	Antler
65	Adept	675	Aggress	25000	Antelope
70	Adhere	700	Aghast	36000	Antidote

NOTE.—The above Code for TELEGRAMS only—Not for orders by mail.

WHOLESALE PRICE LIST
== OF ==
SEEDS IN BULK
1929



Italian Green Sprouting Broccoli

D. M. FERRY & CO.

DETROIT, MICHIGAN